

## GELCOVER™ PLASTIC DUCT COVER



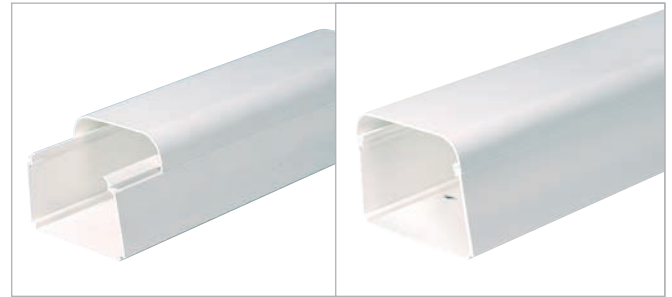
### APPLICATIONS

It perfectly covers every pipe, line-sets and wires for HVAC systems installations, providing great protection for outdoor and also indoor applications. All parts and accessories connect to each other with just a click: no screw required.

### TECHNICAL SPECS

**Material:** Extruded Rigid PVC  
**Density:** 0.036 lb / in<sup>3</sup> ISO1183 tested  
**Vicat Softening Point:** 174F ISO306 tested  
**Hardness:** 81 Shores D ISO868 tested  
**Elastic Modulus:** 3600 MPa ISO178 tested  
**Yield Point:** 32 N/mm<sup>2</sup> ISO527 tested  
**Tensile Strength:** 33 N/mm<sup>2</sup> ISO527 tested  
**Deformation at Break:** 110% ISO527 tested  
**Izod impact test:** 75 J/m ISO180 tested  
**Inflammability:** Class V0 UL 94 tested

### TRY IT, CLICK IT

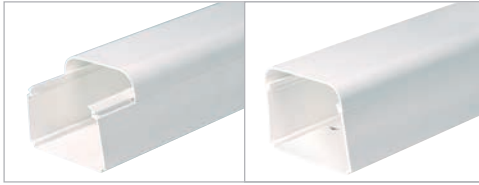


### CONNECT WITH JUST ONE CLICK!

### SPECIAL FEATURES

**Screw-less Fittings:** Gelcover parts connect to each other with just a click.  
**Weather/Vandalism/FIRE and Pets/Pests proof:** Gelcover protects pipes, line-sets and cables from severe weather conditions, vandalism, pets and pests  
**UV resistant:** Gelcover Plastic Ducts and its accessories are all UV resistant.  
**Paintable:** can be painted to match surroundings.

PDM® recommends product installation under GELCOVER plastic ducts to protect it from severe weather conditions, accidental damages or thefts.



## GelCover Duct

UV-Ray Stabilized, Fireproof, Paint Ready

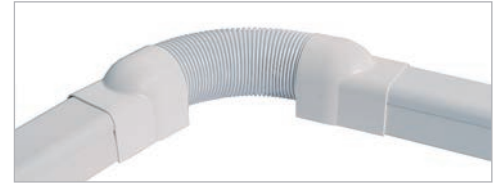
Code	9804-001-08	9802-001-08	9803-001-08
Model	<b>DUE70</b>	<b>DUE90</b>	<b>DUE125</b>
Dimension (mm) AXB	70x55	90x65	125x75
Dimension (inch.)	2-3/4"x2-1/8"	3-1/2"x2-9/16"	4-15/16"x2-15/16"
Qty/ctn (pcs)	12	8	6



## Tightening Clamp

Holds pipes/cables inside duct. Adjustable.

Code	9804-101-00	9802-101-00	9803-101-00
Model	<b>PFBE70</b>	<b>PFBE90</b>	<b>PFBE125</b>
Dimension (mm)	70x55	90x65	125x75
Dimension (inch.)	2-3/4"x2-1/8"	3-1/2"x2-9/16"	4-15/16"x2-15/16"
Qty/ctn (pcs)	25	25	25



## Flexible Sleeve

Makes installations much easier.

Code	9804-118-08	9802-118-08
Model	<b>FLES90</b>	<b>FLES70</b>
Dimension (mm)	90x65	70x55
Dimension (inch.)	3-1/2"x2-9/16"	2-3/4"x2-1/8"
Qty/ctn (pcs)	6	6



## Adjustable Bend

Can be adjusted from 45° to 135°.

Code	9804-117-08	9802-117-08
Model	<b>ABE70</b>	<b>ABE90</b>
Dimension (mm)	70x55	90x65
Dimension (inch.)	2-3/4"x2-1/8"	3-1/2"x2-9/16"
Qty/ctn (pcs)	6	6



## End Cover

To finish the duct in the wall insertion.

Code	9804-114-08	9802-114-08	9803-114-08
Model	<b>EDTE70</b>	<b>EDTE90</b>	<b>EDTE125</b>
Dimension (mm)	70x55	90x65	125x75
Dimension (inch.)	2-3/4"x2-1/8"	3-1/2"x2-9/16"	4-15/16"x2-15/16"
Qty/ctn (pcs)	10	10	10



## Internal Elbow

To connect two ducts at right internal angles.

Code	9804-112-08	9802-112-08	9803-112-08
Model	<b>CBE70</b>	<b>CBE90</b>	<b>CBE125</b>
Dimension (mm)	70x55	90x65	125x75
Dimension (inch.)	2-3/4"x2-1/8"	3-1/2"x2-9/16"	4-15/16"x2-15/16"
Qty/ctn (pcs)	10	10	10



## External Elbow

To connect two ducts at right external angles.

Code	9804-113-08	9802-113-08	9803-113-08
Model	<b>EBE70</b>	<b>EBE90</b>	<b>EBE125</b>
Dimension (mm)	70x55	90x65	125x75
Dimension (inch.)	2-3/4"x2-1/8"	3-1/2"x2-9/16"	4-15/16"x2-15/16"
Qty/ctn (pcs)	10	10	10



## Joint Reduction

To connect two ducts of different sizes.

Code	9804-201-08	9803-201-08
Model	<b>OTP70</b>	<b>OTP125</b>
Dimension (mm)	90x70	125x90
Dimension (inch.)	3-1/2"x2-3/4"	4-15/16"x3-1/2"
Qty/ctn (pcs)	10	10



## Wall Duct

To cover the through wall holes.

Code	9804-111-08	9802-111-08	9803-111-08
Model	<b>WDE70</b>	<b>WDE90</b>	<b>WDE125</b>
Dimension (mm)	70x55	90x65	125x75
Dimension (inch.)	2-3/4"x2-1/8"	3-1/2"x2-9/16"	4-15/16"x2-15/16"
Qty/ctn (pcs)	10	10	10



## Wall Bend

To cover wall holes and the end of the duct.

Code	9804-116-08	9802-116-08	9803-116-08
Model	<b>WTE70</b>	<b>WTE90</b>	<b>WTE125</b>
Dimension (mm)	70x55	90x65	125x75
Dimension (inch.)	2-3/4"x2-1/8"	3-1/2"x2-9/16"	4-15/16"x2-15/16"
Qty/ctn (pcs)	10	10	10



## Flat Bend

To connect one horizontal and vertical duct.

Code	9804-115-08	9802-115-08	9803-115-08
Model	<b>FBE70</b>	<b>FBE90</b>	<b>FBE125</b>
Dimension (mm)	70x55	90x65	125x75
Dimension (inch.)	2-3/4"x2-1/8"	3-1/2"x2-9/16"	4-15/16"x2-15/16"
Qty/ctn (pcs)	10	10	10



## T-Joint

A three way connector for pipes/cables.

Code	9802-200-08	9803-200-08	To be used together with
Model	<b>TJE90</b>	<b>TJE125</b>	OTP joint-reduction.
Dimension (mm)	90x65	125x75	
Dimension (inch.)	3-1/2"x2-9/16"	4-15/16"x2-15/16"	
Qty/ctn (pcs)	8	8	



## Upper Connector

Connects two ducts.

Code	9804-102-08	9802-102-08	9803-102-08
Model	<b>CSE70</b>	<b>CSE90</b>	<b>CSE125</b>
Dimension (mm)	70x55	90x65	125x75
Dimension (inch.)	2-3/4"x2-1/8"	3-1/2"x2-9/16"	4-15/16"x2-15/16"
Qty/ctn (pcs)	25	25	25



## Upper Connector with Seal

Connects two ducts.

Code	9804-103-08
Model	<b>CSE70</b>
Dimension (mm)	70x55
Dimension (inch.)	2-3/4"x2-1/8"
Qty/ctn (pcs)	20